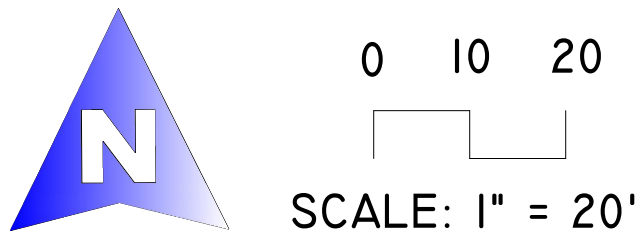
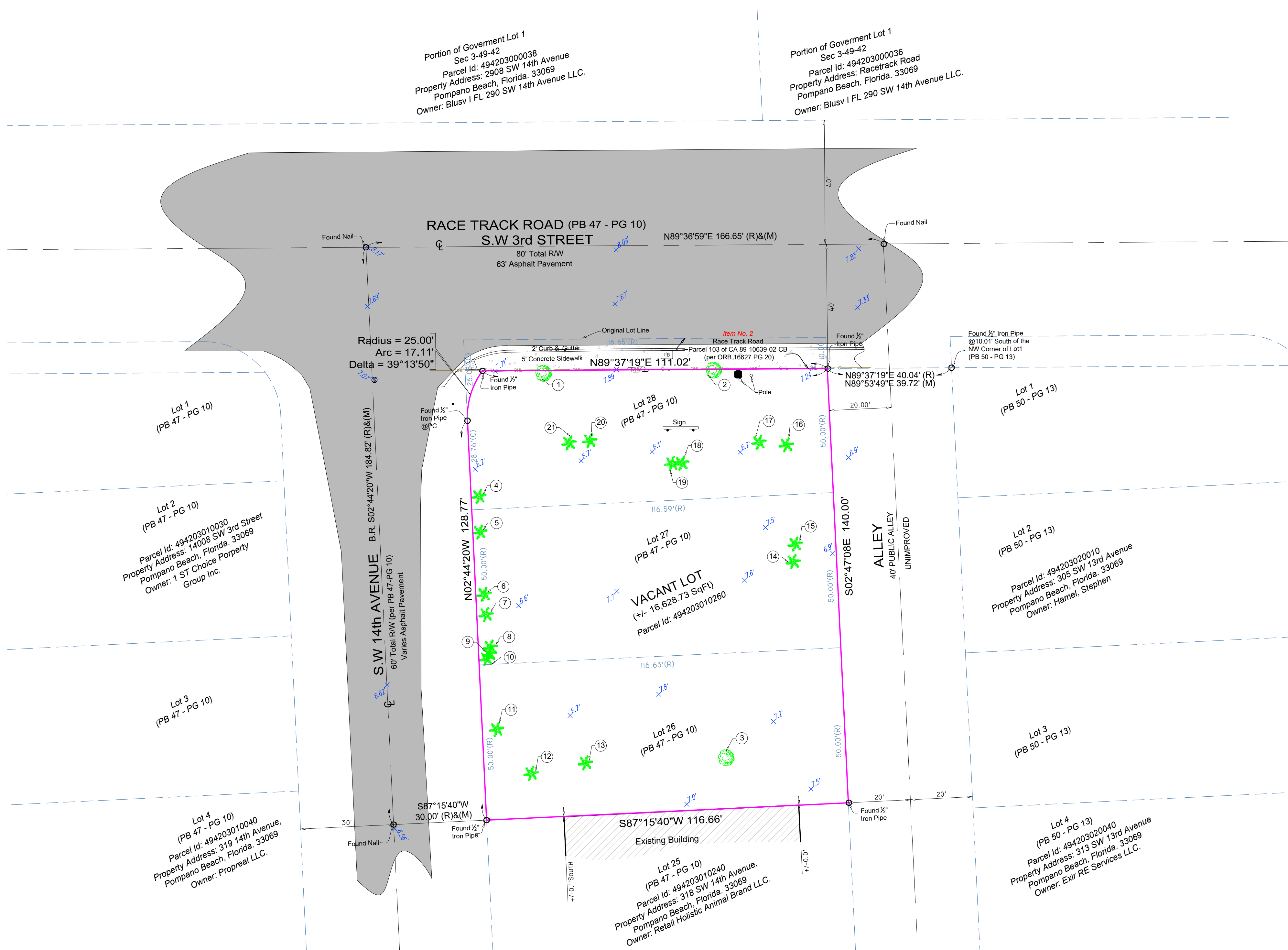


ALTA / NSPS LAND TITLE SURVEY

A PARCEL OF LAND LYING AND BEING A PORTION OF THE WEST 1/2 OF THE NE 1/4 OF THE SECTION 3, TOWNSHIP 49 SOUTH, RANGE 42 EAST, CITY OF BROWARD COUNTY, FLORIDA



10 SURVEY MAP



9 TREE CHART

Note: Tree Location Survey has not been performed based on a Certified Arborist Report. Common names and scientific names were determined to the best of our knowledge.

TREE CHART					
Tree #	Common Name	Scientific Name	Trunk Diameter at Breast Height DBH(in) (+/-)	Approximate Height (ft)(+/-)	Approximate Canopy (ft)(+/-)
1	Unknown	Unknown	10	12	8
2	Unknown	Unknown	10	12	6
3	Unknown	Unknown	24	30	30
4	Sabal Palmetto Tree	Swamp Cabbage tree	16	20	10
5	Sabal Palmetto Tree	Swamp Cabbage tree	16	20	10
6	Sabal Palmetto Tree	Swamp Cabbage tree	12	12	10
7	Sabal Palmetto Tree	Swamp Cabbage tree	12	12	14
8	Sabal Palmetto Tree	Swamp Cabbage tree	12	12	10
9	Sabal Palmetto Tree	Swamp Cabbage tree	12	12	10
10	Sabal Palmetto Tree	Swamp Cabbage tree	10	12	10
11	Sabal Palmetto Tree	Swamp Cabbage tree	14	12	10
12	Sabal Palmetto Tree	Swamp Cabbage tree	14	12	10
13	Sabal Palmetto Tree	Swamp Cabbage tree	12	12	10
14	Sabal Palmetto Tree	Swamp Cabbage tree	14	14	12
15	Sabal Palmetto Tree	Swamp Cabbage tree	12	12	10
16	Sabal Palmetto Tree	Swamp Cabbage tree	12	20	10
17	Sabal Palmetto Tree	Swamp Cabbage tree	16	15	10
18	Sabal Palmetto Tree	Swamp Cabbage tree	16	15	10
19	Sabal Palmetto Tree	Swamp Cabbage tree	16	15	20
20	Sabal Palmetto Tree	Swamp Cabbage tree	16	15	20
21	Sabal Palmetto Tree	Swamp Cabbage tree	16	18	10

LEGEND, SYMBOLS & ABBREVIATIONS

<div>CONCRETE (CONC.)</div> <div>CONC. BLOCK WALL</div> <div>WOOD DECK</div> <div>COVERED AREA</div> <div>PAVERS SLAB / DRIVEWAY</div> <div>TILE SLAB / DRIVEWAY</div> <div>ASPHALT PAVEMENT</div> <div>CHAIN LINK FENCE (CLF)</div> <div>WOOD FENCE (WF)</div> <div>IRON METAL BARS FENCE (IF)</div> <div>PLASTIC FENCE (PF)</div> <div>METAL FENCE (MF)</div> <div>OVERHEAD UTILITY LINES</div>	<div>WATER VALVE</div> <div>POWER POLE</div> <div>GLY ANCHOR</div> <div>WATER METER</div> <div>CONC. LIGHT POLE</div> <div>WELL</div> <div>ELECTRIC BOX</div> <div>STREET SIGN</div> <div>SANITARY MANHOLE</div> <div>DRAINAGE MANHOLE</div> <div>MANHOLE</div> <div>FIRE HYDRANT</div> <div>CENTER LINE</div> <div>CABLE BOX (CATV)</div>	<div>PPL TRANSFORMER</div> <div>CATCH BASIN OR INLET</div> <div>EXISTING ELEVATION</div> <div>PERMANENT REFERENCE MONUMENT</div> <div>PROPERTY CORNER</div> <div>PERMANENT CONTROL POINT</div> <div>A/C - AIR CONDITIONER PAD</div> <div>BASE BUILDING LINE</div> <div>BENCHMARK</div> <div>BEARING REFERENCE</div> <div>CALCULATED</div> <div>CONCRETE BLOCK STRUCTURE</div> <div>CENTER LINE</div> <div>LIGHT BOX</div>	<div>(CMA X-X) = CITY OF MIAMI</div> <div>ELEV = ELEVATION</div> <div>ENCR = ENCROACHMENT</div> <div>FF ELEV = FINISHED FLOOR ELEVATION (FF) = FIELD MEASURED</div> <div>ORB = OFFICIAL RECORD BOOK</div> <div>PPH = PER PLAT OF RECORD</div> <div>PB = PLAT BOOK</div> <div>PCC = POINT OF CURVATURE</div> <div>PG = PAGE</div> <div>PROPERTY LINE</div> <div>PRC = POINT OF REVERSE CURVE</div>	<div>PSM = PROFESSIONAL SURVEYOR</div> <div>ROAD MAPPER</div> <div>PT = POINT OF TANGENCY</div> <div>RSE = RANGE</div> <div>R/W = RIGHT OF WAY</div> <div>SEC = SECTION</div> <div>TBM = TEMPORARY BENCHMARK</div> <div>TWS = TOWNSHIP</div> <div>MDCR = MIAMI-DADE COUNTY RECORDS</div> <div>BCR = BROWARD COUNTY RECORDS</div>
---	--	---	---	--

2 PROPERTY ADDRESS

S.W. 14th Avenue, Pompano Beach, Florida 33069

Additions and deletions to this Survey Map are prohibited. This Survey Map and Report are not valid without the signature and original raised seal or without the authorized electronic signature and seal of the undersigning Florida licensed Surveyor and Mapper.

QA/QC BY: O.C.B.I

DRAWN BY: I.C

FIELD DATE: 03-18-2024

UPDATED DATE: N/A

8 PROJECT NUMBER

23663 Page 2 of 2

AAC

PZ23-12000055

08/19/2025

BELLO & BELLO LAND SURVEYING

12230 SW 131 AVENUE • SUITE 207 • MIAMI FL 33186
LB#7262 • Phone: 305.251.9606 • Fax: 305.251.6057
e-mail: info@belloland.com • www.bellolandsurveying.com

